

## SPECIFICATIONS

### iineo+ I CAPABILITY

<b>Tact time</b>	iineo+ I – 0.257 sec – 14,000cph (IPC 11,580cph) iineo+ IT – 0.234 sec – 15,390cph (IPC 12,550cph)
<b>Placement accuracy</b>	35µm (QFPs) to 60µm (chips) @ 3 sigma
<b>Placement head</b>	1 rotary turret head on X/Y linear motor gantry iineo+ I with 8 nozzle positions iineo+ IT with 12 nozzle positions
<b>Nozzles</b>	1 x 40 position 'smart' nozzle tool bank (20, 40 & 60 positions as an option)(Special tool banks as an option)
<b>Component analysis</b>	'On-the-fly' high resolution digital camera (fixed camera as an option)
<b>Feeder range</b>	Full range of intelligent feeders for 8mm to 104mm tapes, components in plastic sticks and matrix trays
<b>Feeder capacity</b>	264 x 8mm tape feeder positions 10 Jedic matrix trays (equivalent)

### iineo+ II CAPABILITY

<b>Tact time</b>	iineo+ II – 0.137 sec – 26,300cph (IPC 22,030cph) iineo+ IIT – 0.12 sec – 30,000cph (IPC 24,200cph)
<b>Placement accuracy</b>	35µm (QFPs) to 60µm (chips) @ 3 sigma
<b>Placement head</b>	2 rotary turret heads on X/Y linear motor gantries iineo+ II with 8 nozzle positions iineo+ IIT with 12 nozzle positions
<b>Nozzles</b>	2 x 40 position 'smart' nozzle tool bank (1 x 40 + 1 x 20 + 1 special bank as an option)
<b>Component analysis</b>	'On-the-fly' high resolution digital camera (fixed camera as an option)
<b>Feeder range</b>	Full range of intelligent feeders for 8mm to 104mm tapes, components in plastic sticks and matrix trays
<b>Feeder capacity</b>	264 x 8mm tape feeder positions 3 or 4 Jedic matrix trays (equivalent)

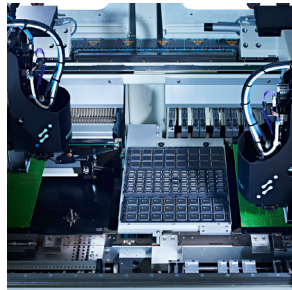
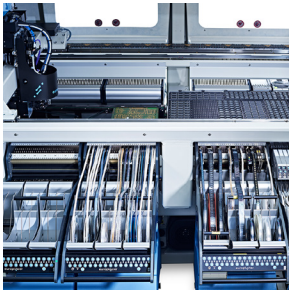
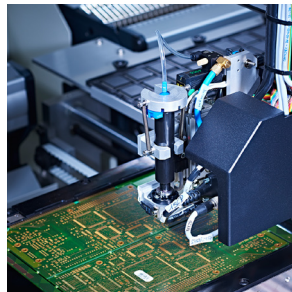
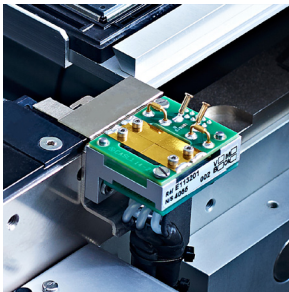
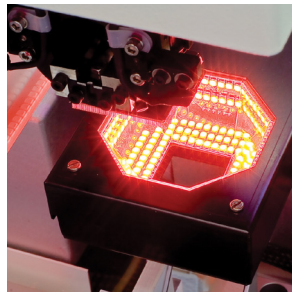
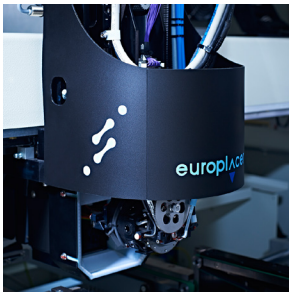
### BOARD HANDLING

<b>Minimum PCB size</b>	60mm x 60mm
<b>Maximum PCB sizes iineo+ I</b>	700mm x 460mm (700mm x 425mm with tray sequencer at rear) 700mm x 600mm (max. 132 positions 8mm) 1000mm x 460mm (1000mm x 425mm with tray sequencer at rear) 1000mm x 600mm (max. 132 positions 8mm) 1610mm x 460mm (1610mm x 425mm with tray sequencer at rear) 1610mm x 600mm (max. 132 positions 8mm)
<b>Maximum PCB sizes iineo+ II</b>	500mm x 460mm (500mm x 425mm with tray sequencer at rear) 500mm x 600mm (max. 132 positions 8mm) 700mm x 460mm (700mm x 425mm with tray sequencer at rear) 700mm x 600mm (max. 132 positions 8mm) 1610mm x 460mm (1610mm x 425mm with tray sequencer at rear) 1610mm x 600mm (max. 132 positions 8mm)
<b>Thickness</b>	0.5mm to 10.0mm
<b>Weight</b>	3kg max. (10kg max. as an option)
<b>Under board clearance</b>	25mm
<b>Board location</b>	Full edge clamping with fiducial correction
<b>Board edge clearance</b>	3mm above, 5mm below
<b>Transport criteria</b>	Left to right (right to left optional), fixed front rail, height-adjustable 890mm to 975mm, SMEMA interface

### COMPONENT RANGE

<b>Types</b>	Chips, MELFs, electrolytic capacitors, S0, PLCC, QFP, TSOP, QFN, BGA, µBGA, LGA, CSP, connectors, Flip chip, through hole and odd-form surface mount devices
<b>Minimum size</b>	0.4mm x 0.2mm (01005)
<b>Maximum size</b>	50mm x 50mm as standard; 70mm x 70mm and 100mm long connectors with fixed camera option (99mm x 99mm under certain conditions)
<b>Maximum height</b>	Full revolution of turret 12mm iineo+ I and iineo+ II – 1 component mode 34mm iineo+ IT and iineo+ IIT – 1 component mode 31mm
<b>Minimum lead pitch</b>	0.3mm (QFP), 0.4mm (µBGA) 0.15mm (QFP), 0.2mm (µBGA) with optional fixed camera
<b>Minimum lead/ball size</b>	0.15mm (QFP), 0.2mm (µBGA) 0.07mm (QFP), 0.1mm (µBGA) with optional fixed camera

## SPECIFICATIONS



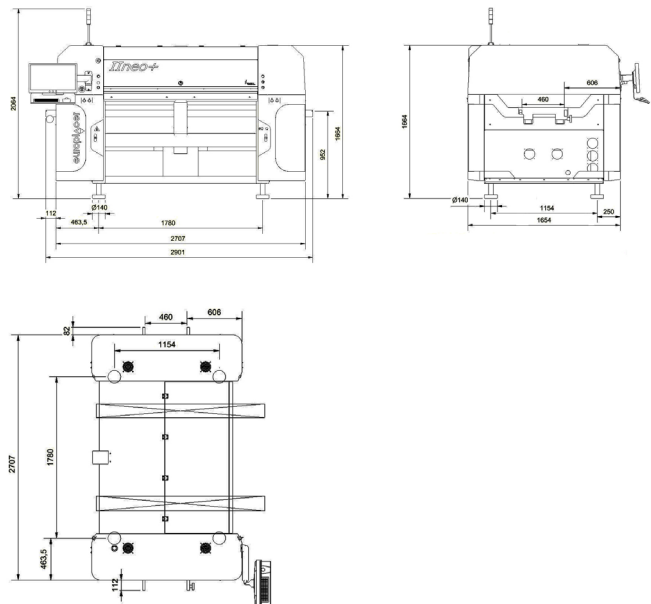
### GENERAL

Electrical	400V/210V three phase 50Hz/60Hz, 5kVA
Air	7 bar, 30l/min
Noise	<70dB (A)
Working temperature	10°C to 30°C, ideally 20°C +/- 5°C
Humidity	20% to 80% RH non-condensing
Weight iineo+ I	2000kg (without feeders)
Weight iineo+ II	2200kg (without feeders)
Colour	RAL9002, RAL5024, RAL7043

### OPTIONS

Fixed upward looking camera for larger and very fine pitch components	iineo+ I:	Internal fixed tray holder zone 1000mm x 490mm – 10 Jedgec tray equivalent (550mm x 490mm – 7 Jedgec tray equivalent with PCB length of 1000mm)
Feeder trolley options for bulk change of individual feeders and 'mass' tape feeder ranges		
30-position automatic tray loader (sequencer)	iineo+ II:	Internal fixed tray holder zone 460mm x 325mm – 3 Jedgec tray equivalent (4 Jedgec tray equivalent with wide board option)
Electrical component testing		
Glue dispenser		
Dispenser with Archimedean screw		
Automatic conveyor width adjustment		
Additional nozzle magazines		
Rear operating station		

### Dimensions in mm.



As part of our policy of continuous development, specifications are subject to change without prior notice.