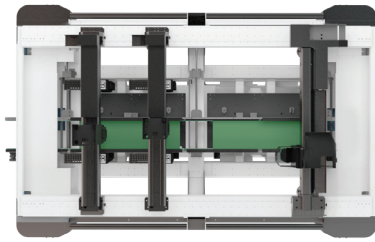
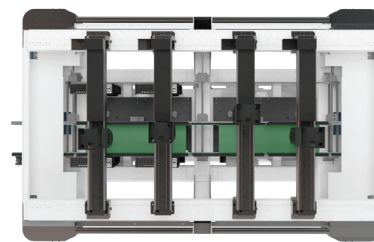




With its high placement speeds, huge capacity, impressive flexibility and extensive range of options, the **atom** platform is all about maximising productivity.



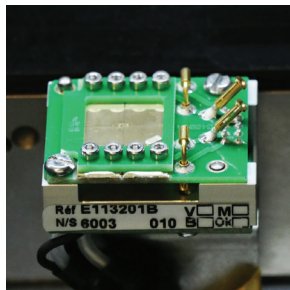
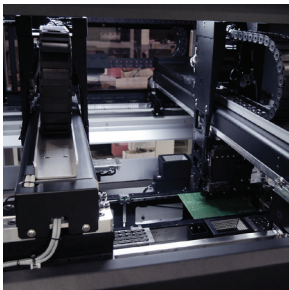
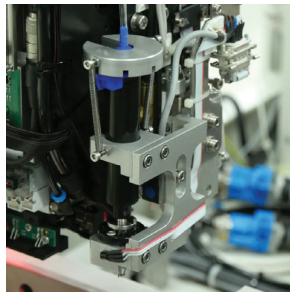
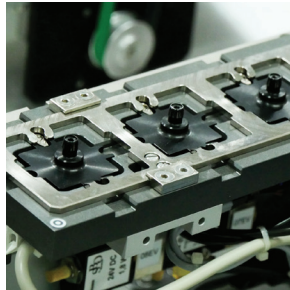
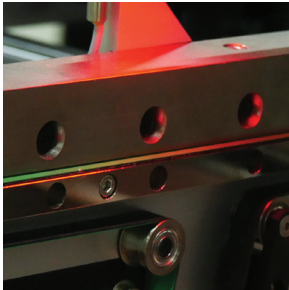
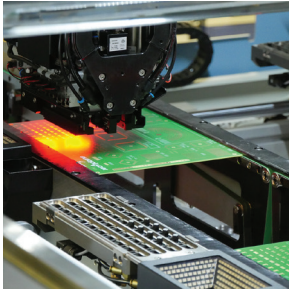
atom3



atom4

SPECIFICATIONS

Head Type	Pulsar		Tornado		
Technology	Pipette		Turret		
Nozzle position	8		8		
Placement speed	Max IPC	26 800 Cph (takt time) 20 000 Cph	14 000 Cph (takt time) 11 580 Cph		
Placement accuracy	Chips QFP	50 µm @3σ Cpk ≥ 1.0 22 µm @3σ Cpk ≥ 1.0	46 µm @3σ Cpk ≥ 1.0 22 µm @3σ Cpk ≥ 1.0		
Component range	Size	Standard 0.4 x 0.2 mm (01005) - 13 x 13 mm	Standard 0.4 x 0.2 mm (01005) - 50 x 50 mm	Fixed camera Up to 70 x 70 mm (or 100mm length)	Under conditions Up to 99 x 99 mm
	Height	Up to 7 mm		Up to 21 mm	
	Type	µBGA, LGA, CSP, Connectors, Flip chip, Trough hole and odd-form devices			
	Min lead pitch	0.3 mm (QFP) / 0.4 mm (µBGA)			
Min lead/ball size	0.15 mm (QFP) / 0.2 mm (µBGA) with optional fixed camera for turret		0.15 mm (QFP) / 0.2 mm (µBGA)		
Machine Type	atom3		atom4		
Configuration	2x Pulsar Heads + 1 Turret Head 3x Independent X/Y linear gantries		4x Pulsar Heads 4x Independent X/Y linear gantries		
'Smart' Nozzle tool banks	Standard	2x 40 positions in front	Options Up to 2x additional 40 positions at rear	Standard	4x 40 positions in front
		1x 60 positions in front	1x additional special tool bank (for odd form) 1x 40 or 20 positions in front	Options	Up to 4x additional 40 positions at rear
Component Analysis	2x 'fly over' high resolution digital camera in front 1x 'On-the-fly' high resolution digital camera		2x 'fly over' high resolution digital camera at rear 1x fixed camera		
Feeders	Capacity Range	264 x 8mm tape feeder position + equivalent of 5 Jdec matrix tray		264 x 8mm tape feeder position	
Board Handling	Min PCB Size	Full range of Eurolplacer intelligent feeder for 8mm to 104mm tapes, plastic sticks, wide range of matrix trays feeders, Sequencer, short tape feeders, bulk feeders, Fluxer, Label feeder, solder ball feeder		50 mm x 45 mm (l x w)	
	Max Length	865 mm (2059mm *Software retrofit only - in year 2020)		825 mm (2099mm *Software retrofit only - in year 2020)	
	Max Width	460 mm as standard / 510 mm (without camera-nozzles at rear) / 715 mm (without feeder at rear)			
	Thickness	0.5 mm to 10.0 mm			
	Max Weight	3 Kg / (10 Kg as an option)			
	Board clearance	Under clearance: 25mm Edge clearance: 3mm			
Board location	Full edge clamping with fiducial correction				
Conveyor type	Patented intelligent tracking system: without mechanical stopper, fully flexible, real-time status, contributes to throughput optimization				
Transport criteria	Left to right, fixed front rail, height-adjustable 890mm to 975mm, SMEIA interface				



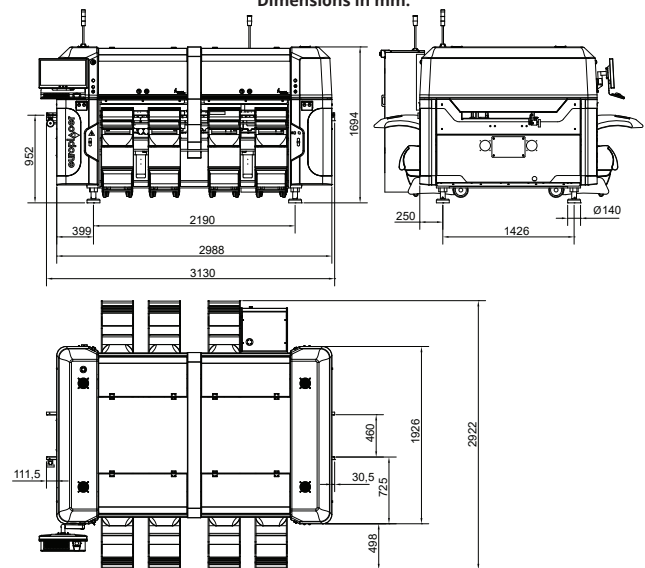
GENERAL

Electrical	400V/210V three phase 50Hz/60Hz, 8kVA
Air	7 bar, 30l/min
Noise	<70dB (A)
Working temperature	10°C to 30°C, ideally 20°C +/- 5°C
Humidity	20% to 80% RH non-condensing
Weight atom 3-4	3000 kg - 3200 kg (without feeders and packaging)
Colour	RAL9002, RAL5024, RAL7043

OPTIONS

- Fixed upward looking camera for larger and very fine pitch components on Turret head
 - Electrical component testing
 - Glue dispenser
 - Glue/paste Dispenser with Archimedean screw
 - Motorization of conveyor width adjustment
 - HeavyPCB kit for conveyor (10 kgs)
 - Wide pcb kit 510mm (with no camera/nozzles at rear)
 - Wide pcb kit 715mm (with no feeder at the rear)
 - Rear operating station
 - Keyboard, mouse, support
- 60 position 'smart' nozzle tool banks in front (atom3)
 - 40 position 'smart' nozzle tool banks in front (atom3)
 - Special tool bank in front (atom3)
 - 40 position 'smart' nozzle tool banks at rear (atom4)
 - 'Fly over' high resolution digital camera at rear (atom4)
- atom3 :**
- Fixed internal tray holder zone 400mm x 490mm – 5 Jedec tray equivalent
 - Articulated internal tray holder zone 400mm x 490mm – 5 Jedec tray equivalent

Dimensions in mm.



As part of our policy of continuous development, specifications are subject to change without prior notice.