

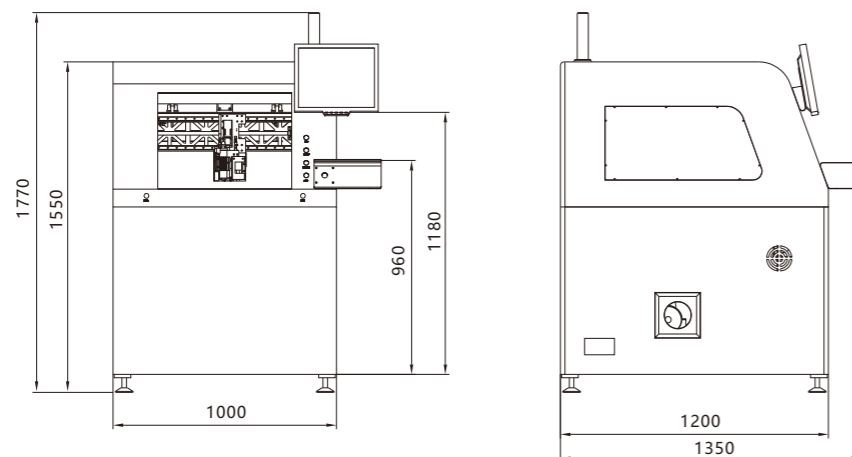
Specification

Model	RM-285	RM-385	RM-885
Cutter modular	Single head, Dual work table		Double head, Dual work table
Machine Size(mm)	1550(H)×1000(W)×1200(L)		1550(H)×1200(W)×1400(L)
Weight	约 / Appro. 700Kg		约 / Appro. 900Kg
Vacuum unit size(mm)	625(L)×600(W)×1160(H)mm		
Vacuum Power	3HP/2.2KW		
Vacuum Weight	约 / About 130kg		
Power Input	3.5KW(3相 Three Phase)		
Dust Collection Method	Bottom Suction		
Work Table Size	300×400mm		410×510mm
Table Drive	The double work table rotation mode, precision slicer with three phase motor inverter		
Drive System	X/Y/Z axis driven by servo motor; W axis driven by three phase motor frequency converter		
Routing Spindle	50000rpm/min, Automatic cooling	60000rpm/min, Automatic cooling	
Cutting Speed	1~100mm/Sec		
Cutting Accuracy	± 0.05mm		
Repeat Accuracy	±0.02mm		
Moving Speed	800mm/s		
Z Axis System	Screw driven, dual guide		
Milling Cutter	Φ0.8~Φ3.0-knife, Shank Tungsten Steel		
Tool Life Control	Software Program Control		
Security-Door	Manual Door		Automatic Door
Error Alarm	Yes		
Self-Cleaning System	Standard configuration		
Programming Method	Camera Assisted Teaching		

Note:

Optional: top dust collecting device, safe light curtain and ion air nozzle.

Machine dimensions



Vanstron

VANSTRON AUTOMATION CO.,LTD.

Haobao industrial park, No.43,
Xin Er Hong road, Shajing, Shenzhen,
518000, China
Call: +86-15017908688
e: sales@vanstron.com
w: www.vanstron.com;

代理商 / 经销商
Agent / Dealer

TEL: 0769-23034996 13925887296

Vanstron

RM-series AUTOMATIC ROUTER MACHINE

RM-285/385/885

MILLING CUTTER FULL-AUTOMATIC ROUTER MACHINE

- It apply to Digital communications, optoelectronic, lighting, PCBA, other.
- Full-electric control to ensure the accuracy of the equipment long-term work.
- 180 degree indexing rotary table, to improve production efficiency.
- Independent research and control systems, security and stability is easy to upgrade.
- Reasonable mechanical structure, small size, high precision cutting.

- High Efficiency
- High Precision
- High Flexibility



Product overview

The milling cutter automatic router machine, is also known as the substrate cutting machine, or substrate partitioning,

It is using of high-speed rotating with main shaft driven cutter for cutting.

It is available to cut the PCBs substrates with high-density mounted and inserted components and other materials.



■ Design philosophy

- ◆ Electric control, no gas source.
- ◆ High stability, easy maintenance.
- ◆ Simple operation, short changeover time.
- ◆ Designed for small and medium-sized PCBA board.

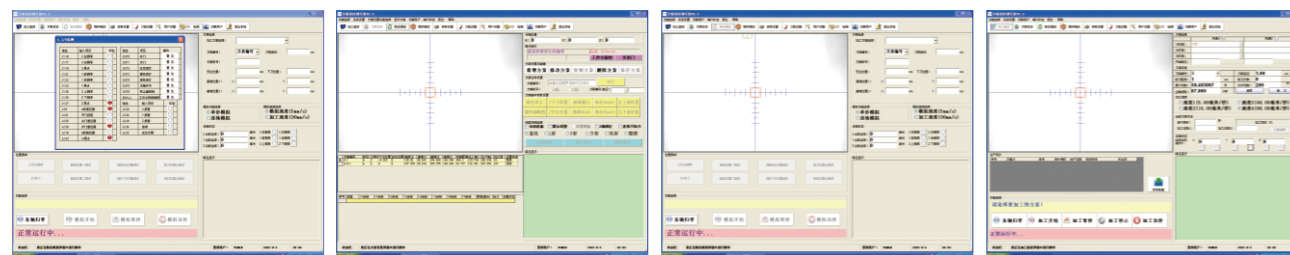
■ Ultra silent vacuum cleaner (SIEMENS Motor)

Voltage	380V/50Hz
Power	2.2KW
Air pressure	1500Pa
Max air flow	2800m ³ /h
Noise	< 77dB
Air inlet	Φ125mm
Filter efficiency	99%
Material	Water & Oil proof
Filter rating	3-5μm
Quantity	1pcs
Filter type	Negative pressure filtration
Cleaning way	Hand vibration dust
Capacity of the dust container	12L
Dimension	625×600×1160mm



■ User Friendly operation system

Full proprietary rights of the WINDOWS 7 Oprating System allows reasonable user-friendly operation and convenient visibility of I/O ports during maintenance.



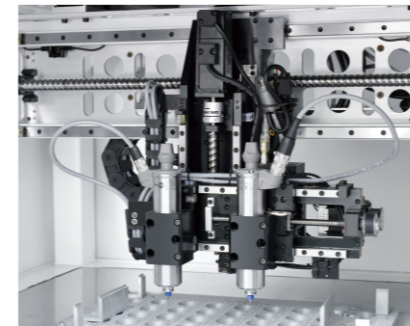
inspection

Solution

simulation

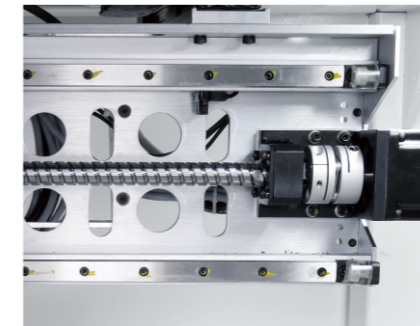
manufacturing

Features



■ innovative suspension router table

The design of the Driving Shaft located in the center and the Driven shaft located on stability, results to a stable structure and compact size(Requiring less than 50% footprint compared to Industry standard).



■ Movement system

The X, Y, and Z shafts are made from 5 grade grinding precision ball guide screws and driven by AC servo motors, which superb performance and stability is achieved with an automatic gain control, with frequency up to 1KHz high speed response time and self adopting shock reduction filters.



■ Superb vision system

The high resolution CCD Camera allows the user to edit the cutting path easily with it's automatic calibration feature resulting to a very accurate cutting operation.

Note:
RM-285/385 Single head
RM-885 Double head



■ Rotary workbench structure

The workbench design is driven by a high pulling torque segmentation(180 degree), provides more precision and stability than cylinder driven machines workbenches. This innovative rotary workbench design also allows simultaneous operation of different cutting algorithms on both the A and B workbench, thereby reducing changeover idle capacity and maximizing productivity.

■ Dust collection system

The dust collection system and antistatic blower maintain the system clean during operation.

■ Milling cutter management

Allowing the Cutting Blade setup by stages greatly reduces the cost for consumables.

■ Cutter system

The milling cutter is driven by a high speed spindle with the advantage of a reduced cutting force, high accuracy, low noise and is suitable for all cutting formats such as circles, straight line, L or U type, squares and arc shapes.

■ Self recovery diagnostic system

The Self Diagnostic System allows easy troubleshooting of malfunctions during production and reduces downtime.

