

TR7710 SERIES



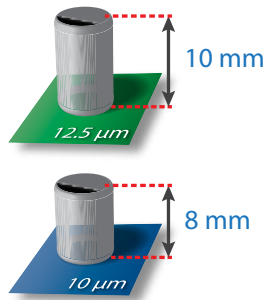
- Economical High Performance Inline AOI
- High Speed Stop-and-Go Inspection
- NPI-Optimized Easy Programming Wizard
- Clear Imaging with Large DOF

**AUTOMATED
OPTICAL INSPECTION**

TR7710 FEATURES

Economical High Performance AOI Solution

TR7710 combines a precise high resolution camera system and TRI's exclusive multi-phase lighting to capture detailed PCB panel images. New optical solution offers increased DOF range for tall components with optional high clearance. TRI Series III AOI-compatible inspection software combines excellent defect detection and easy smart CAD-based programming into a cost effective AOI solution designed to fit any budget.

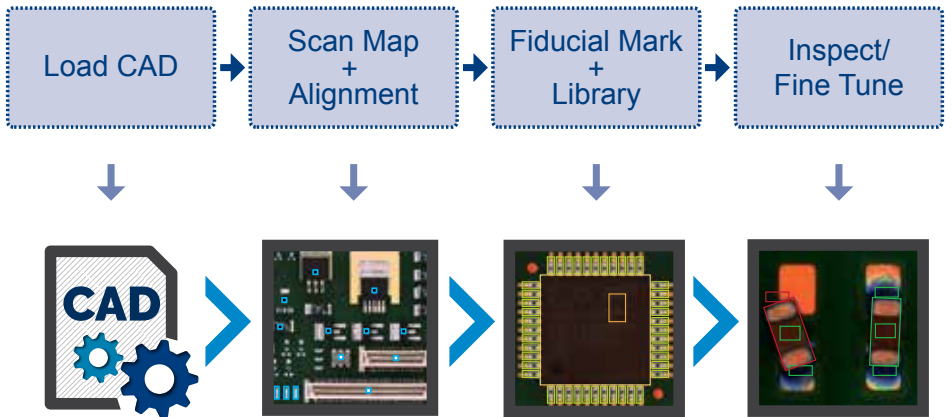


Wide DOF Range Ensures Clear Marking Inspection on Tall Components

Intelligent Easy Programming Interface

New intelligent programming process significantly reduces programming time using intelligent component library and integrated board warp compensation.

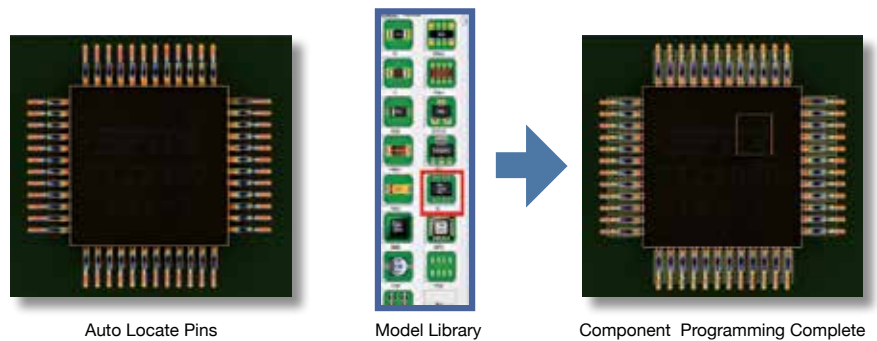
Programming Flowchart



TRI AOI Programming Flow in a Few Simple Steps

Smart Library + Model Library

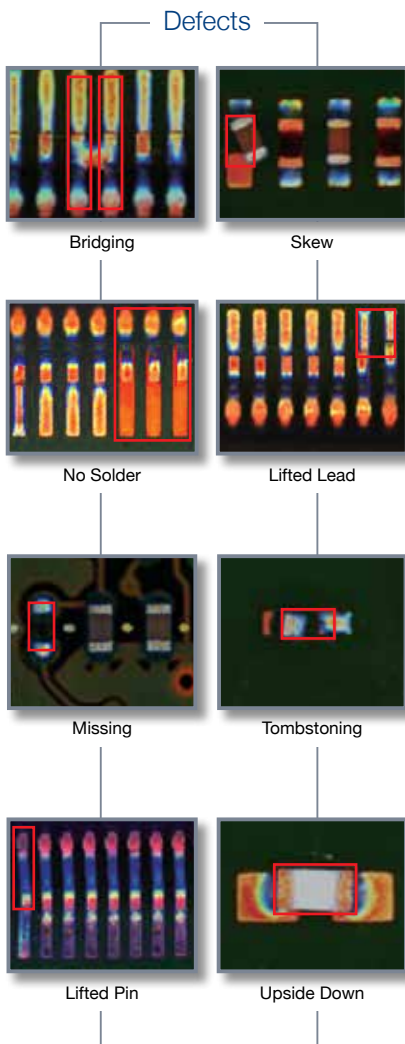
Smart Library speeds up programming by automatically allocating inspection windows for IC leads.



Auto Locate Pins

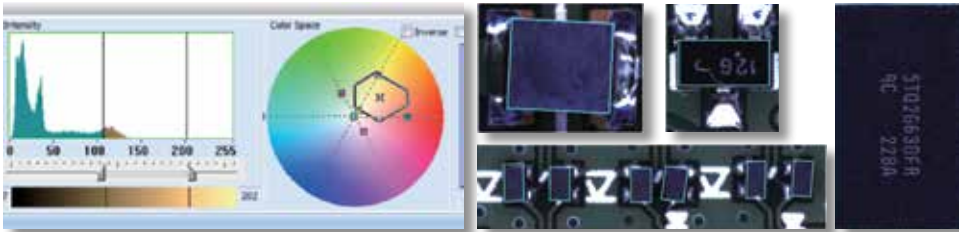
Model Library

Component Programming Complete



Adaptive Color Space Algorithms

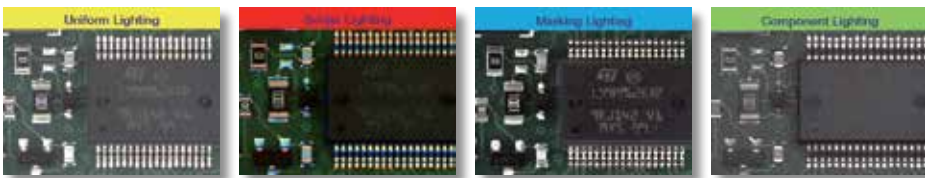
TRI's new adaptive algorithms use color space processing to increase inspection accuracy, reduce false calls and improve inspection results while reducing time necessary for inspection fine tuning and the number of alternative images required.



Color Differentiation Analysis for Black Resin Parts

Accurate Inspection with Multi-phase Lighting

Four individual lighting phases improve inspection of individual defect types using specialized lighting conditions. High speed camera allows inspection at constant speed even with multiple lighting phases.



Intelligent Auto Conveyor System (IACS)

IACS automatically optimizes board stopping position in the conveyor, minimizing product changeover time and eliminating manual conveyor adjustments.

Yield Management System 4.0

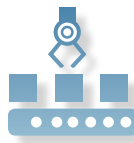
YMS 4.0 provides a M2M centralized inspection monitoring and remote access fine tuning throughout the SMT line. Built-in support for SPI, AOI, AXI and ICT systems helps track Alarms and SPC data to simplify production quality monitoring. YMS 4.0 is TRI's Industry 4.0 closed loop software to assure your production line inspection quality and efficiency.



INCREASE EFFICIENCY



REDUCE MANPOWER

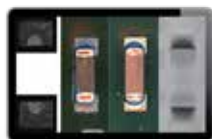


LEANER PRODUCTION LINE

The Yield Management System allows operators to aggregate information from individual TRI inspection systems for statistical analysis of production line defect rates, reviewing and fine-tuning inspection results, and identifying component defect trends and emerging production issues.



PRODUCTION ANALYSIS

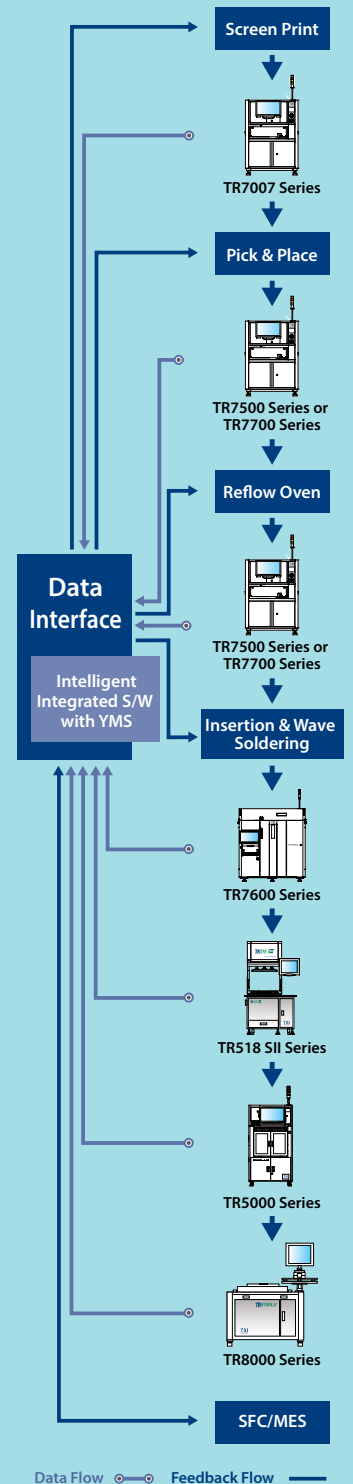


CENTRALIZED INSPECTION CENTER



REAL TIME SPC TREND

Yield Management System



- Inspection results and data integration
- Real time SPC and production yield management
- Quality reports and closed loop tracking
- Support defect component analysis and improvements
- Knowledge Management (KM)
- Productivity and Quality Management

Optical & Imaging System

Top View Camera	6.5 MP high speed color camera
Lighting	Multi-phase RGB+W LED
Optical Resolution	10 or 12.5 μ m (factory setting)
Imaging Method	Stop-and-Go

Imaging/Inspection Speed

12.5 μ m	43 cm ² /sec
10 μ m	27 cm ² /sec

Pre-/Post-Reflow Inspection Functions

Component	Missing, Tombstoning, Billboarding, Polarity, Rotation, Shift, Wrong Marking (OCV), Defective, Upside Down, Extra Component, Foreign Material
Solder Joint	Excess Solder, Insufficient Solder, Bridging, Through-hole Pins, Lifted Lead, Golden Finger Scratch/Contamination

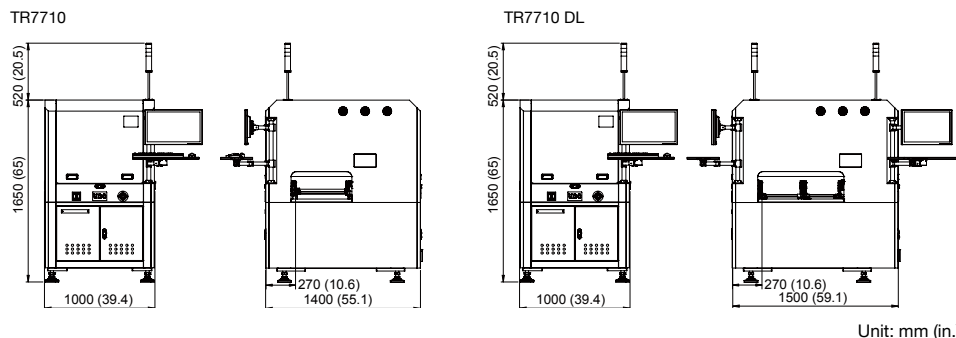
X-Y Table & Control

Ballscrew + AC servo with motion controller	
X-Y Axis Resolution	1 μ m

PCB & Conveyor System

	TR7710		TR7710 DL	
	12.5 μ m	10 μ m	12.5 μ m	10 μ m
Optical Resolution	12.5 μ m	10 μ m	12.5 μ m	10 μ m
Min. PCB Size	50 x 50 mm (1.97 x 1.97 in.)			
Max. PCB Size	510 x 460 mm (20.0 x 18.1 in.)		510 x 310 mm x 2 lanes (20.1 x 12.2 in. x 2 lanes) 510 x 590 mm x 1 lane (20.1 x 23.2 in. x 1 lane)	
Max. PCB Thickness	0.6 - 5 mm			
PCB Transport Height	880 - 920 mm (34.6 - 36.2 in.)			
Max. PCB Weight	3 kg (6.61 lbs)			
PCB Carrier/Fixing	Step motor driven conveyor & pneumatic clamping			
Clearance				
Top	25 mm (0.98 in.)			
Bottom	40 mm (1.58 in.). Optional: 100 mm (3.94 in.)			
Edge	3 mm (0.12 in.). Optional: 5 mm (0.04 in.)			

Dimensions



	TR7710	TR7710 DL
Weight	600 kg (1323 lbs)	650 kg (1433 lbs)
Power Requirement	200 - 240 VAC, 15 A, single phase, 50/60 Hz, 3 kVA	
Air Requirement	72 psi - 87 psi (5 - 6 bar)	

Options

Barcode Scanner, Repair Station, Offline Editor, OCR, Yield Management System 4.0 (YMS 4.0), Support Pin, Dual Lane

Headquarters

7F., No.45, Dexing West Rd.,
Shilin Dist., Taipei City
11158, Taiwan
TEL: +886-2-2832-8918
FAX: +886-2-2831-0598
E-Mail: sales@tri.com.tw
http://www.tri.com.tw

Linkou, Taiwan

No.256, Huaya 2nd Rd.,
Guishan Dist., Taoyuan
City 33383, Taiwan
TEL: +886-2-2832-8918
FAX: +886-3-328-6579

Hsinchu, Taiwan

7F., No.47, Guangming 6th
Rd., Zhubei City, Hsinchu
County 30268, Taiwan
TEL: +886-2-2832-8918
FAX: +886-3-553-9786

Shenzhen, China

5F.3, Guangxia Rd.,
Shang-mei-lin Area,
Fu-Tian Dist., Shenzhen,
Guangdong, 518049, China
TEL: +86-755-83112668
FAX: +86-755-83108177
E-mail: shenzhen@cn.tri.com.tw

Suzhou, China

B Unit, Building 4, 78 Xinglin St.,
Suzhou Industrial Park,
215123, China
TEL: +86-512-68250001
FAX: +86-512-68096639
E-mail: suzhou@cn.tri.com.tw

Shanghai, China

Room 6C, Building 14,
470 Guiping Rd., Xuhui Dist.,
Shanghai, 200233, China
TEL: +86-21-54270101
FAX: +86-21-64957923
E-mail: shanghai@cn.tri.com.tw

USA

832 Jury Court, Suite 4,
San Jose, CA 95112 U.S.A
TEL: +1-408-567-9898
FAX: +1-408-567-9288
E-mail: triusa@tri.com.tw

Europe

Gugelstr. 32
90443 Nuremberg
Germany
TEL: +49-9119-401-7827
FAX: +49-9119-400-6181
E-mail: trieuropa@tri.com.tw

Japan

4-26-10 Ishiwara, Sumida-ku,
Tokyo, 130-0011 Japan
TEL: +81-3-6273-0518
FAX: +81-3-6273-0519
E-mail: trijp@tri.com.tw

Korea

No.207 Daewoo-Technopia,
768-1 Wonsi-Dong, Danwon-Gu,
Ansan City, Gyeonggi-Do, Korea
TEL: +82-31-470-8858
FAX: +82-31-470-8859
E-mail: trikr@tri.com.tw

Malaysia

C11-1, Ground Floor, Lorong
Bayan Indah 3 Bay Avenue,
11900 Bayan Lepas Penang,
Malaysia
TEL: +604-6461171
E-mail: trimy@tri.com.tw

Specifications are subject to change without notice. Content may not be used as acceptance criteria. All trademarks are the property of their owners.

TRI 德律 TRI INNOVATION

The absence of a product or service name or logo from this list does not constitute a waiver of TRI's trademark or other intellectual property rights concerning that name or logo. All other trademarks and trade names are the property of their owners.

